

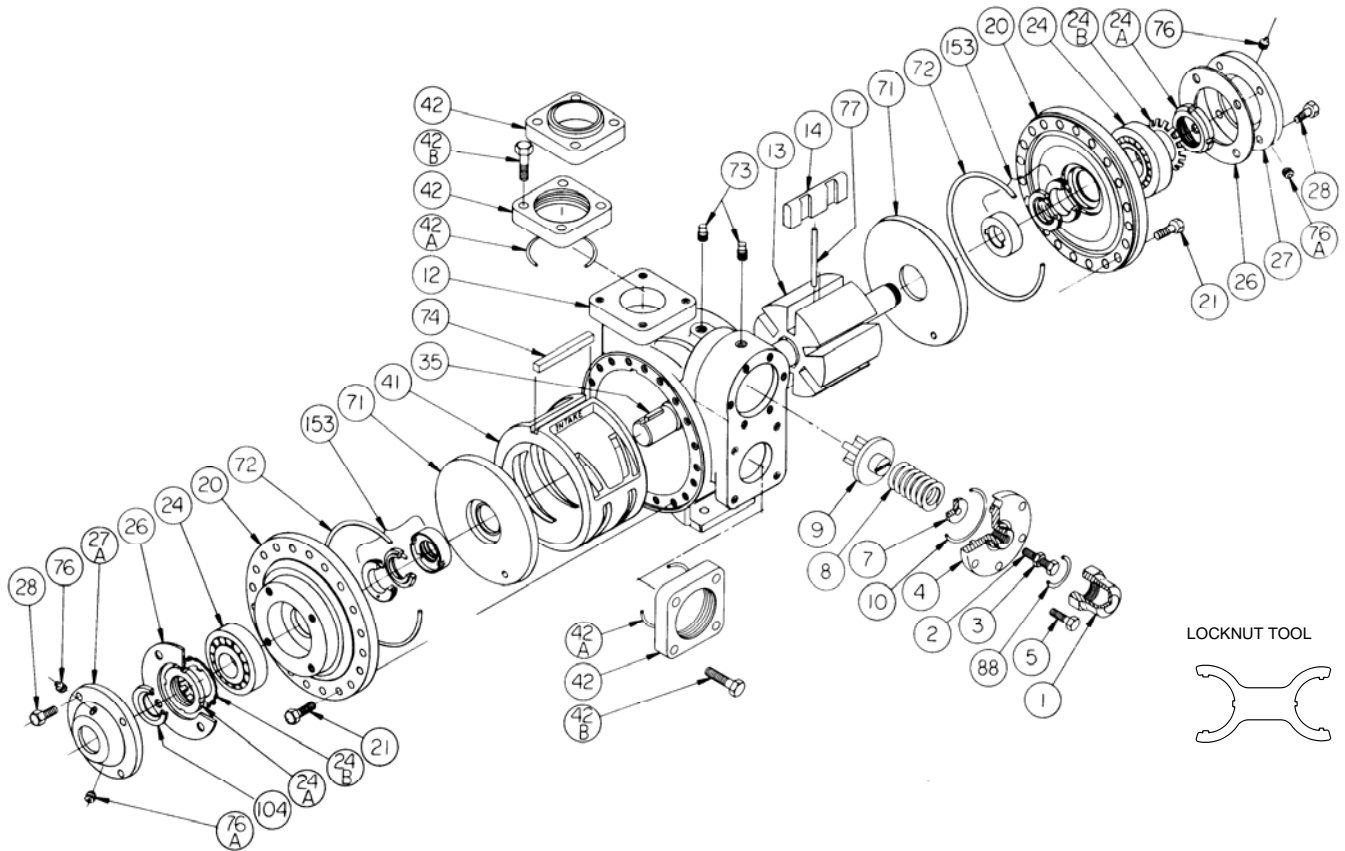
BLACKMER PARTS LIST

PUMP MODELS: XLW2F, XLW3F

DISCONTINUED MODELS: XLW2E-N, XLW3E-N

Keep with Instructions 105-B00 Installation, Operation and Maintenance

Section | 105
Effective | Aug 2010
Replaces | Jan 2010



Ref. No.	Description	Parts per Pump	Size 2 Part No.	Size 3 Part No.	Ref. No.	Description	Parts per Pump	Size 2 Part No.	Size 3 Part No.
1	Cap – Relief Valve (R/V)	1	414402	414402	27	Bearing Cover – Outboard	1	041433	041817
2	Adjusting Screw – R/V	1	433905	435109	27A	Bearing Cover – Inboard	1	041431	041815
3	Locknut – Adjusting Screw	1	922923	922923	28	Capscrews – Bearing Cover	8-12	920285	920285
4	Cover – R/V	1	414408	415109	35	Key – Shaft Square	1	^{1,3} 909209	^{1,3} 909209
5	Capscrew – R/V Cover	6	920316	920331	41	Liner	1	² 183913	² 185116
7	Spring Guide – R/V	1	424401	425109	42 ⁴	Flange – NPT	2	654401	655112
8	Spring – R/V (51-75 psi) (Std.)	1	471425	471612		Flange – Weld		654405	655102
	Spring – R/V (76-110 psi)		471428	471621	42A	O-Ring – Flange (FKM)	2	¹ 702086	¹ 711931
	Spring – R/V (111-150 psi)		471424	475109		O-Ring - Flange (PTFE)		702078	702080
9	Valve – R/V	1	454405	455109	42B	Capscrew – NPT Flange	8	920384	920547
10	O-Ring – R/V Cover (FKM)	1	¹ 711929	¹ 701924		Capscrew – Weld, ANSI		920351	920510
	O-Ring - R/V Cover (PTFE)		702077	702079	71	Disc	2	² 063900	² 065114
12	Casing	1	014405	015127	72	O-Ring – Head (FKM)	2	¹ 702045	¹ 711938
13	EC Rotor & Shaft Asy.(-.045) (Std)	1	² 263927	² 265143		O-Ring – Head (PTFE)		702081	702082
	FS Rotor & Shaft Asy. (Both Include Ref. 24A & 24B)		263923	265204	73	Gage Plug	2	908195	908195
14	Vane – EC Hardened Iron (Std.)	6	¹ 093931	¹ 095129	74	Key – Liner	1	² 183991	² 185191
	Vane – EC Laminate		091429	095107	76	Grease Fitting	2	317815	317815
20	Head	2	034416	035128	76A	Grease Relief Fitting	2	701992	701992
21	Capscrews – Head	32-40	920351	920369	77	Push Rod	3	¹ 123905	¹ 125105
24	Ball Bearing	2	¹ 903156	¹ 903172	88	O-Ring – R/V Cap (FKM)	1	¹ 701979	¹ 701979
24A	Locknut – Bearing	2	903521	903523		O-Ring - R/V Cap (PTFE)		702075	702075
24B	Lockwasher – Bearing	2	¹ 903522	¹ 903524	104	Grease Seal	1	¹ 331918	¹ 331908
26	Gasket – Bearing Cover	2	¹ 383940	¹ 385125		Tool - Locknut		903091	903091
						Kit - Maintenance		898974	898975
						Kit - Rebuild		899074	899075

¹ Included in Maintenance Kit and Rebuild Kit

² Included in Rebuild Kit

EC = Extra Clearance

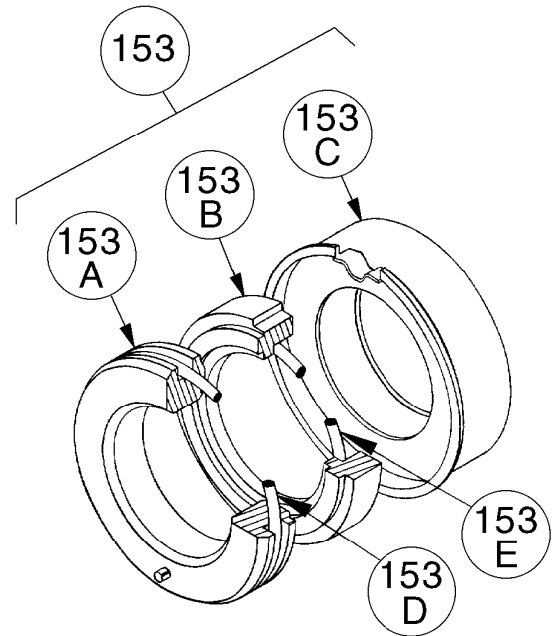
FS = Full Size

³ Maintenance & Rebuild Kits also include Woodruff Key 909130 used previously

⁴ See more flanges on backside.

MECHANICAL SEALS

Ref. No.	Part Name	Parts Per Pump	Size 2 Part No.	Size 3 Part No.
153	Mechanical Seal Complete – (Std.) Silicon Carbide Stationary Seat, Hardened Steel Seal Face, FKM O-Rings. (LVSV)	2	¹ 333919	¹ 335147
	Mechanical Seal Complete – Silicon Carbide Stationary Seat, Hardened Steel Seal Face, PTFE O-Rings. (LAST)		333922	335150
	Mechanical Seal Complete – Silicon Carbide Stationary Seat, Silicon Carbide Seal Face, FKM O-Rings. (LVLV)		333921	335149
153A #	Stationary Seat (Silicon Carbide)	2	334422	335141
153B #	Rotating Seal Face (Hardened Steel)	2	333917	335144
	Rotating Seal Face (Silicon Carbide)		333916	335198
153C #	Jacket Assembly	2	331651	335128
153D	O-Ring – Stationary (FKM)	2	701970	702015
	O-Ring – Stationary (PTFE)		702084	711999
153E	O-Ring – Rotating (FKM)	2	701980	701962
	Seal Ring – Rotating (PTFE)		711963	701963

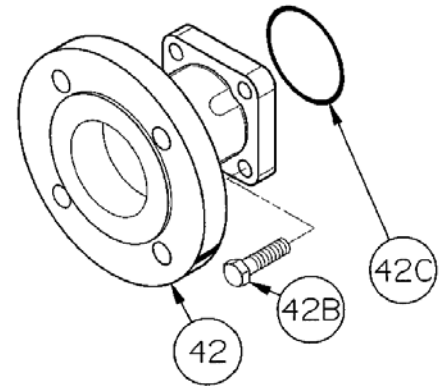


¹ Included in Maintenance Kit and Rebuild Kit

These components are included in the complete mechanical seal assemblies (Ref. No. 153), and are NOT available as replacement parts. Consult factory.

FLANGE OPTIONS

Ref. No.	Part Name	Parts Per Pump	Size 2 Part No.	Size 3 Part No.
42	Flange – ANSI 2" 150 lb. R.F.	1-2	651417	---
	Flange – ANSI 3" 150 lb. R.F.		---	651817



ANSI FLANGE

