

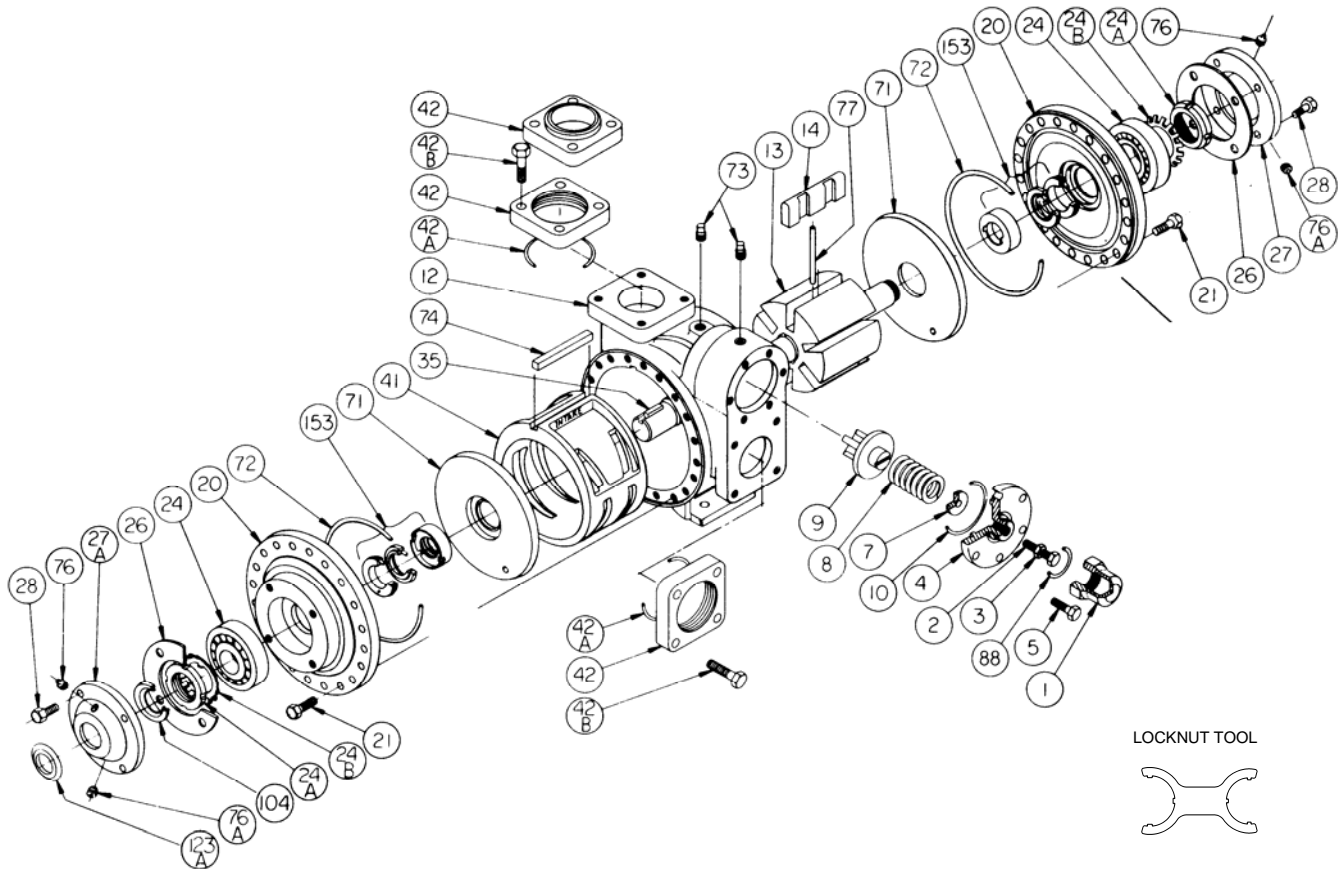
BLACKMER PARTS LIST

PUMP MODEL: XL2B

DISCONTINUED MODELS: XL2A-N, XLS2A-N

Keep with Instructions 107-B00 or for Installation, Operation and Maintenance

Section 107
Effective Sept 2011
Replaces Sept 2009



Ref. No.	Description	Parts per Pump	Part No.	Ref. No.	Description	Parts per Pump	Part No.
1	Cap - Relief Valve (R/V)	1	414402	24B	Lockwasher - Bearing	2	¹ 903522
2	Adjusting Screw - R/V	1	433905	26	Gasket - Bearing Cover	2	¹ 383940
3	Locknut - Adjusting Screw	1	922923	27	Bearing Cover - Outboard	1	041433
4	Cover - R/V	1	414408	27A	Bearing Cover - Inboard	1	041431
5	Capscrew - R/V Cover	6	920316	28	Capscrews - Bearing Cover	8	920285
7	Spring Guide - R/V	1	424401	35	Key - Shaft Square	1	^{1,3} 909209
8	Spring - R/V (51-75 psi)	1	471425	41	Liner	1	² 183913
	Spring - R/V (76-110 psi)		471428	42-42B	Flanges		See Back
	Spring - R/V (111-150 psi)		471424	71	Disc	2	² 064412
9	Valve - R/V	1	454405	72	O-Ring - Head (FKM)	2	¹ 702045
10	O-Ring - R/V Cover (FKM)	1	¹ 711929		O-Ring - Head (PTFE)		702081
	O-Ring - R/V Cover (Buna)		701919		O-Ring - Head (Buna)		702022
	O-Ring - R/V Cover (PTFE)		702077	73	Gage Plug	2	908198
12	Casing	1	014405	74	Key - Liner	1	² 183991
13	Rotor & Shaft	1	² 264443	76	Grease Fitting	2	317815
	EC Rotor & Shaft (.045)		263927	76A	Grease Relief Fitting	2	701992
	(Both include Ref. 24A & 24B)			77	Push Rod	3	¹ 123905
14	Vane - Duravane	6	¹ 091419	88	O-Ring - R/V Cap (FKM)	1	¹ 701979
	Vane - EC Cast Iron		093923		O-Ring - R/V Cap (PTFE)		702075
	Vane - EC Laminate		091429		O-Ring - R/V Cap (Buna)		711917
20	Head	2	034416	104	Grease Seal	1	¹ 331918
21	Capscrews - Head	32	920351	123A	Dirt Shield	1	¹ 701480
24	Ball Bearing	2	¹ 903156		Tool - Locknut		903091
24A	Locknut - Bearing	2	² 903521		Kit - Maintenance		898963
					Kit - Rebuild		899063

¹ Included in Maintenance Kit and Rebuild Kit

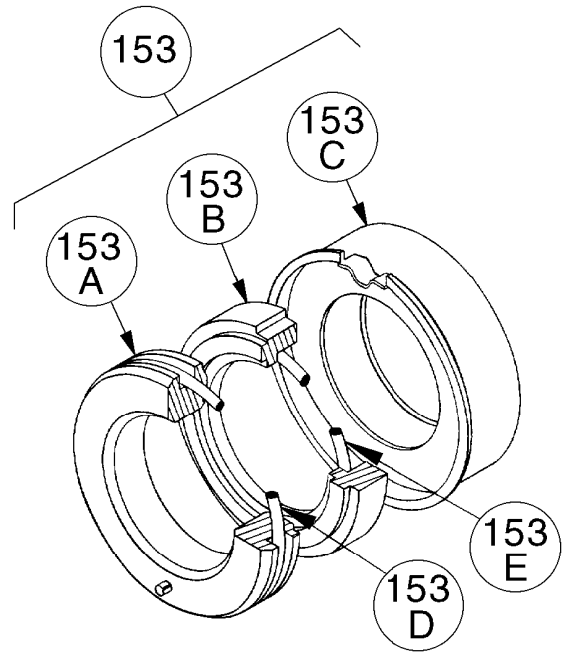
² Included in Rebuild Kit

EC = Extra Clearance

³ Maintenance and Rebuild Kits also include Woodruff Key 909130 used previously.

MECHANICAL SEALS

Ref. No.	Part Name	Parts Per Pump	Part No.
153	Mechanical Seal Complete – Hardened Steel Stationary Seat, Carbon Seal Face, FKM O-Rings. (SVCV)	2	¹ 331656
	Mechanical Seal Complete – Hardened Steel Stationary Seat, Carbon Seal Face, PTFE O-Ring & Seal Ring. (SACT)		333991
	Mechanical Seal Complete – Silicon Carbide Stationary Seat, Carbon Seal Face PTFE O-Ring & Seal Ring. (LACT)		334492
	Mechanical Seal Complete – Silicon Carbide Stationary Seat, Carbon Seal Face, FKM O-Rings. (LVCV)		334491
	Mechanical Seal Complete – Hardened Steel Stationary Seat, Carbon Seal Face, Buna O-Rings. (SNCN)		334439
153A#	Stationary Seat (Hardened Steel) Stationary Seat (Silicon Carbide)	2	331828 334422
153B#	Rotating Seal Face (Carbon)	2	331609
153C#	Jacket Assembly	2	331651
153D	O-Ring – Stationary (FKM)	2	701970
	O-Ring – Stationary (PTFE)		702084
	O-Ring – Stationary (Buna)		711924
153E	O-Ring – Rotating (FKM)	2	701980
	Seal Ring – Rotating (PTFE)		711963
	O-Ring – Rotating (Buna)		711912



¹ Included in Maintenance Kit and Rebuild Kit

These components are included in the complete mechanical seal assemblies (Ref. No. 153), and are NOT available as replacement parts. Consult factory.

FLANGE OPTIONS

Ref. No.	Part Name	Parts Per Pump	Part No.
42	Flange - NPT	1-2	654401
	Flange - Weld		654405
	Flange – ANSI 2" 150 lb. R.F.		651417
42C	O-Ring Flange (FKM)	2	¹ 702086
	O-Ring - Flange (PTFE)		702078
	O-Ring - Flange (Buna)		702004
42B	Capscrew- NPT Flange	8	920384
	Capscrew – Weld/ANSI Flange		920351

¹ Included in Maintenance Kit and Rebuild Kit

